

Green City Clean Waters **IMPACT**



STAYING HEALTHY

Existing research shows that access to parks and green spaces for recreation reduces chronic disease and stress rates, and improves mental health and function.

KEEPING COOL

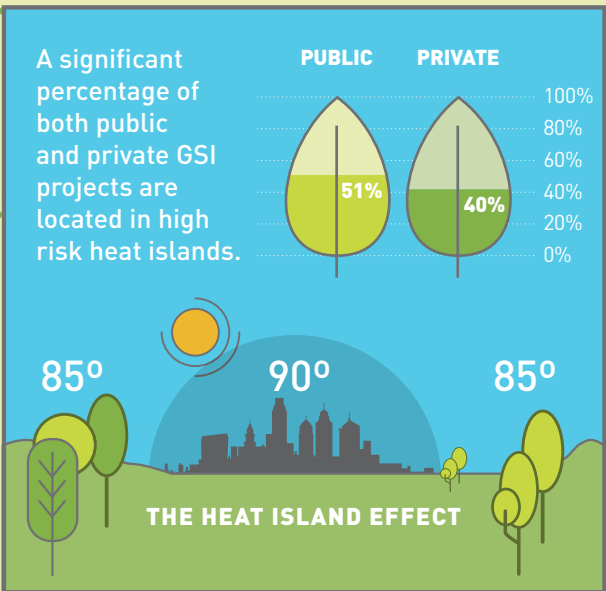
GSI projects reduce surface temperatures and mitigate urban heat islands that elevate air pollution and greenhouse gases, and increase energy consumption.

BEING SAFE

GSI PROJECTS reduce crime within 1/4 mile of site by 10%

COSTS AVOIDED:

\$337M



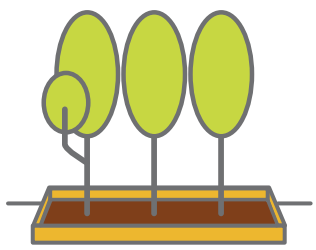
Green City, Clean Waters is Philadelphia's 25-year stormwater management program that primarily uses green stormwater infrastructure to manage combined sewer overflows. The vision of Green City, Clean Waters is "to unite the City of Philadelphia with its water environment, creating a green legacy for future generations while incorporating a balance between ecology, economics, and equity."*

WHAT IS GSI?

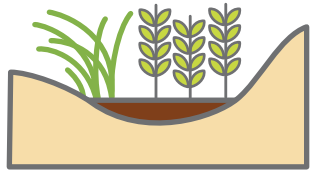
GSI (Green Stormwater Infrastructure) consists of soil-water-plant systems that intercept stormwater through ground infiltration and evaporation.

Forms include:

TREE TRENCHES



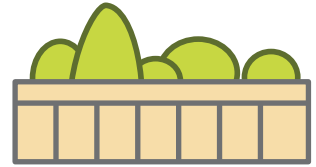
RAIN GARDENS



GREEN ROOFS



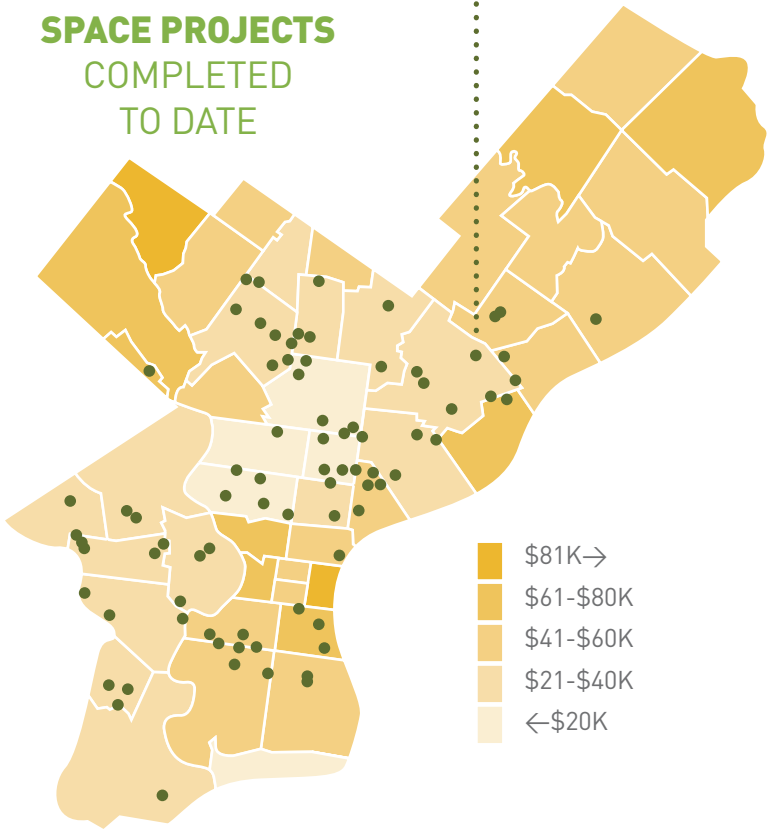
PLANTERS



WHERE IS GSI?

85
PUBLIC OPEN SPACE PROJECTS COMPLETED TO DATE

65% are located in low- and moderate income census blocks



GREEN STORMWATER
INFRASTRUCTURE
PARTNERS™
REIMAGINING STORMWATER

*Philadelphia Water Department, Green City Clean Waters The City of Philadelphia's Program for Combined Sewer Overflow Control Program Summary, June 2011